



S4203
S700BO



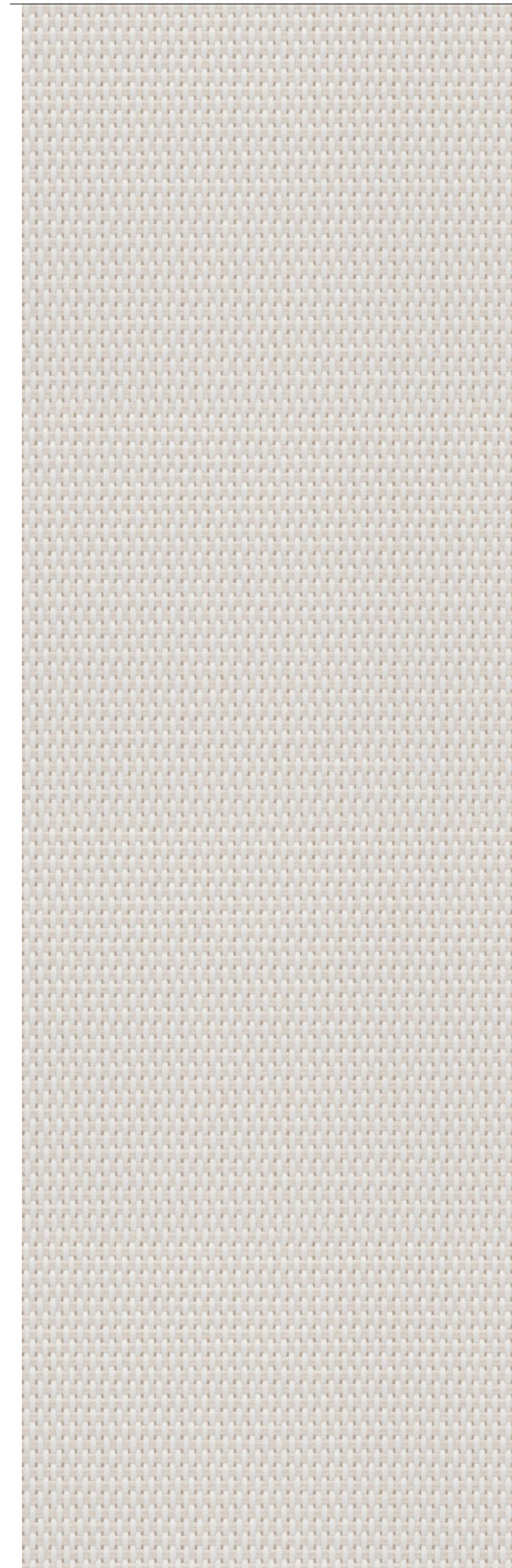
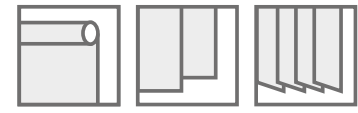
S4203

COMPOSICIÓN	PESO	ESPESOR	RESISTENCIA AL FUEGO	FACTOR DE APERTURA	ANCHO	MANTENIMIENTO
36% FIBRA DE VÍDRIO 64% PVC	420 gr./m ² ± 5%	0,50 mm.	M1 (F) NFP 92 503 B1 (DE) DIN 4102-1 B5 (GB) 476 Pt 6-7 Class 0 EUROCLASS C-s3-do (EU) en 13501-1 IMO-MED 2014/90/eu	3%	320 cms. 89 mms. 127 mms.	LIMPIEZA CON PAÑO HÚMEDO

S700BO

COMPOSICIÓN	PESO	ESPESOR	RESISTENCIA AL FUEGO	FACTOR DE APERTURA	ANCHO	MANTENIMIENTO
100% FIBRA DE VÍDRIO RECUBIERTA, FLOCADO	700 gr./m ² ± 10%	0,55 mm. ± 10%	M1 (F) NFP 92 503 B1 (DE) DIN 4102-1 B5 (GB) 476 Pt 6-7 Class 0 PCS: 15,3 MT/KG (9,03 a 9,94 MT/M ²) EUROCLASS C-s3-do (EU) en 13501-1 IMO-MED 2014/90/eu	BLACK OUT - OPACO 100% a 100.000 LUX (500W)	250 cms.	LIMPIEZA CON PAÑO HÚMEDO

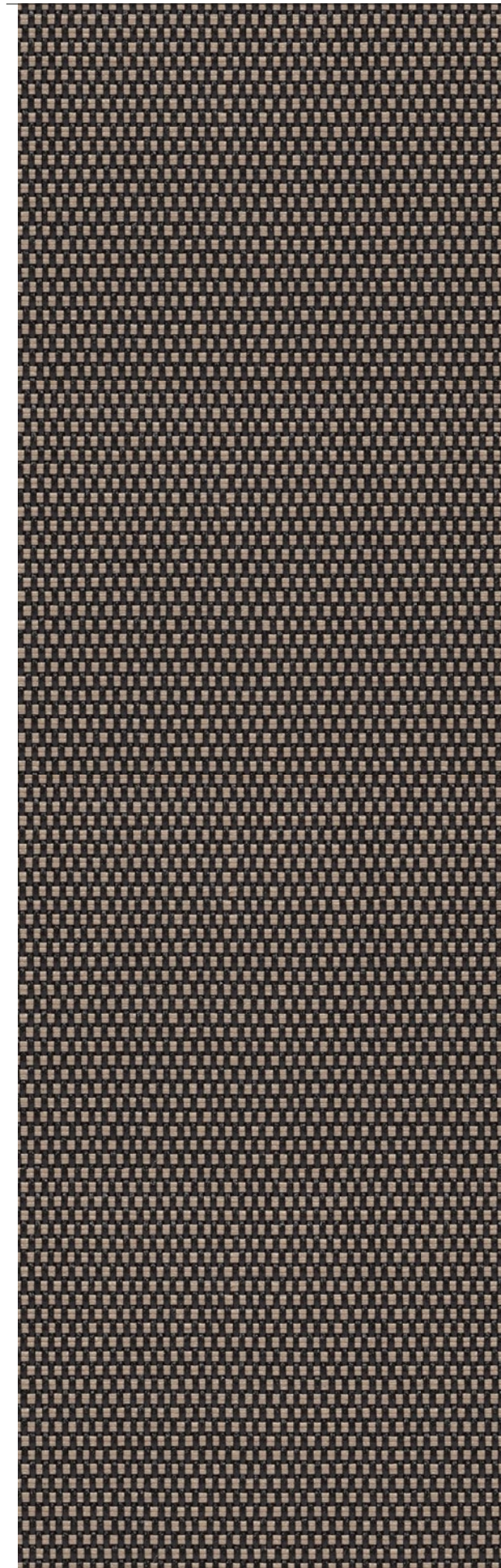
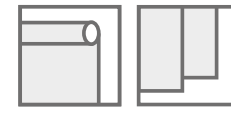
S4203



S4203 (AÑADIR EL NÚMERO DEL COLOR DESEADO)

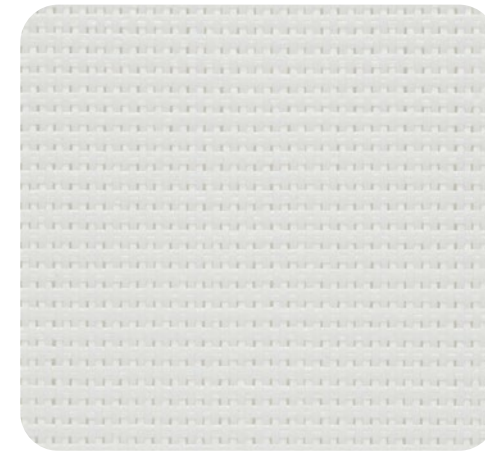
2

S700BO

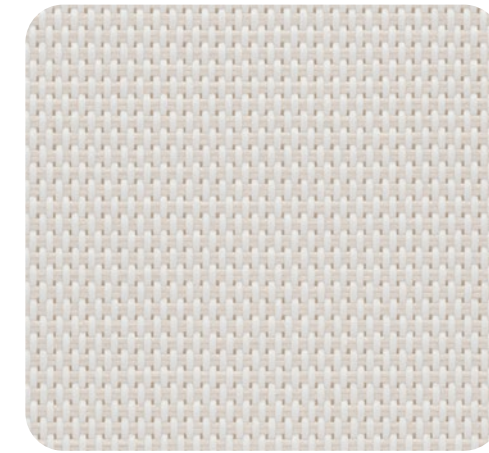


S700BO (AÑADIR EL NÚMERO DEL COLOR DESEADO)

10



1



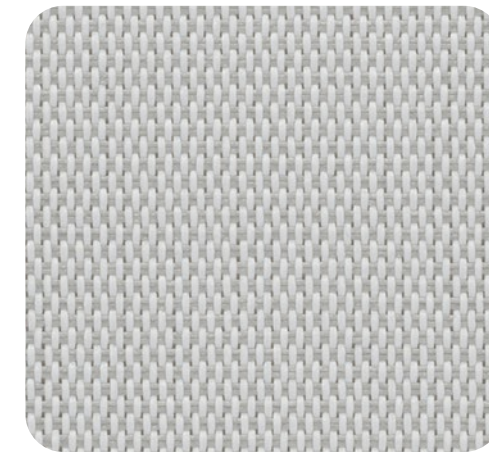
2



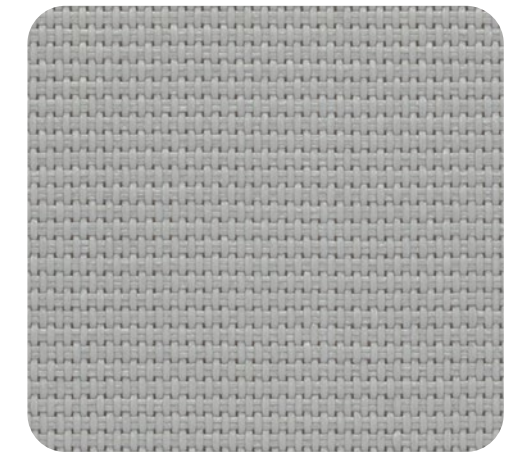
4



10



5



8



9



13



11